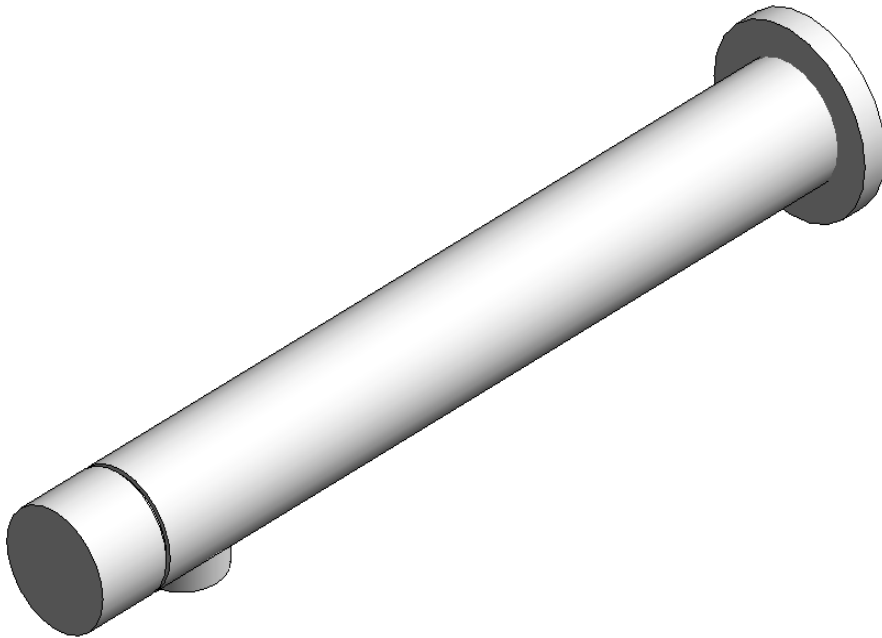


DOLPHIN SOLUTIONS LIMITED  
DOLPHIN PANEL MOUNTED  
INFRARED TAP  
DB1400 - DB1425



Family Types

Name: DB1400/DB1425 Dolphin Panel Mounted Infrared Tap

Parameter	Value
<b>Electrical</b>	
Power Source	Plug-in 9 Volt transformer or 9 Volt Battery (with low battery warning)
<b>Dimensions</b>	
Width	44mm
Projection	220mm
Height	28mm
<b>General</b>	
Product Page Link	<a href="https://www.dolphinsolutions.co.uk/product/panel-mounted-infrared-tap">https://www.dolphinsolutions.co.uk/product/panel-mounted-infrared-tap</a>
Product Data	Touch Free Tap – for ultimate hygiene – prevents cross contamination. Quality po =
<b>Other</b>	
Warranty	2 years
WRAS approved	<input checked="" type="checkbox"/>
BREEAM compliant	<input checked="" type="checkbox"/>
<b>Identity Data</b>	
URL	<a href="http://www.dolphinsolutions.co.uk">www.dolphinsolutions.co.uk</a>
Type Comments	
Tel No.	+44 (0) 1424 202 224
Model	DB1400 / DB1425
Manufacturer	Dolphin Solutions Ltd.
Fax No.	+44 (0) 1424 205 200
Email	<a href="mailto:info@dolphinsolutions.co.uk">info@dolphinsolutions.co.uk</a>
Description	Panel mounted infrared tap
Assembly Code	D2010900
Address	Southpoint, Compass Park, Junction Road, Bodiam, TN32 5BS
Keynote	
Cost	

Family Types: New..., Rename..., Delete

Parameters: Add..., Modify..., Remove

Lookup Tables: Manage...

OK Cancel Apply Help